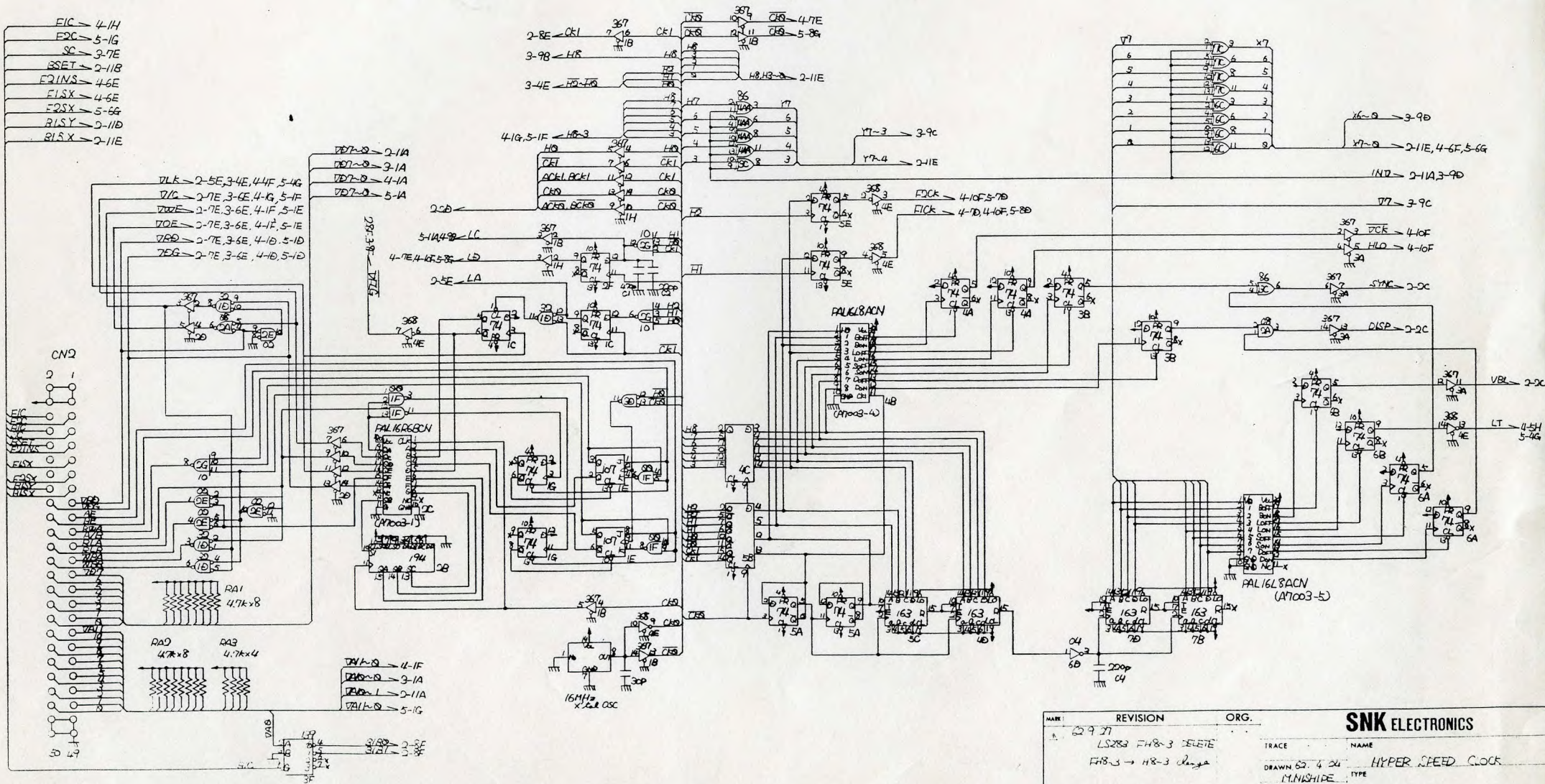
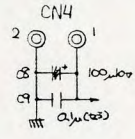


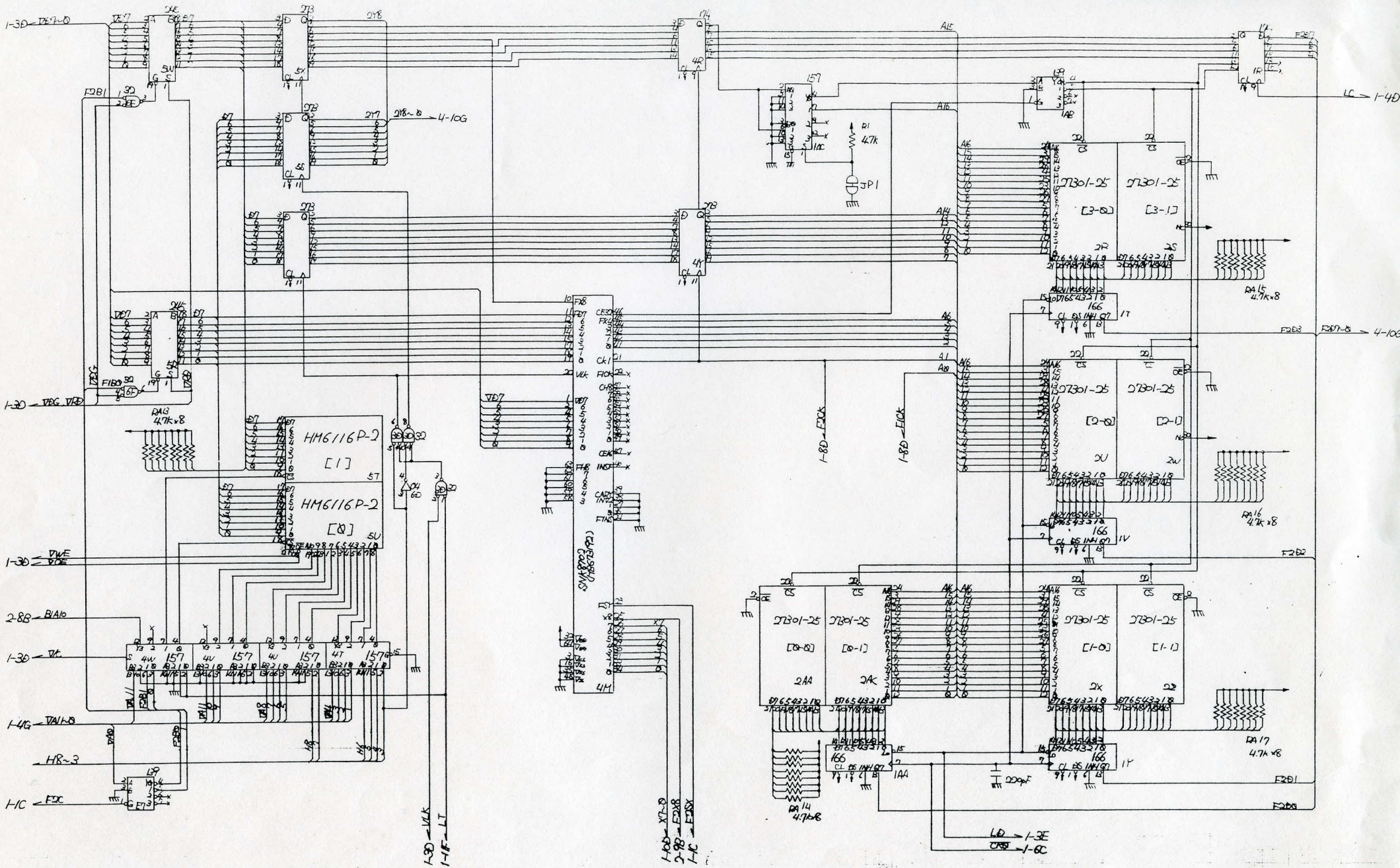
GUERRILLA WAR

17P0102

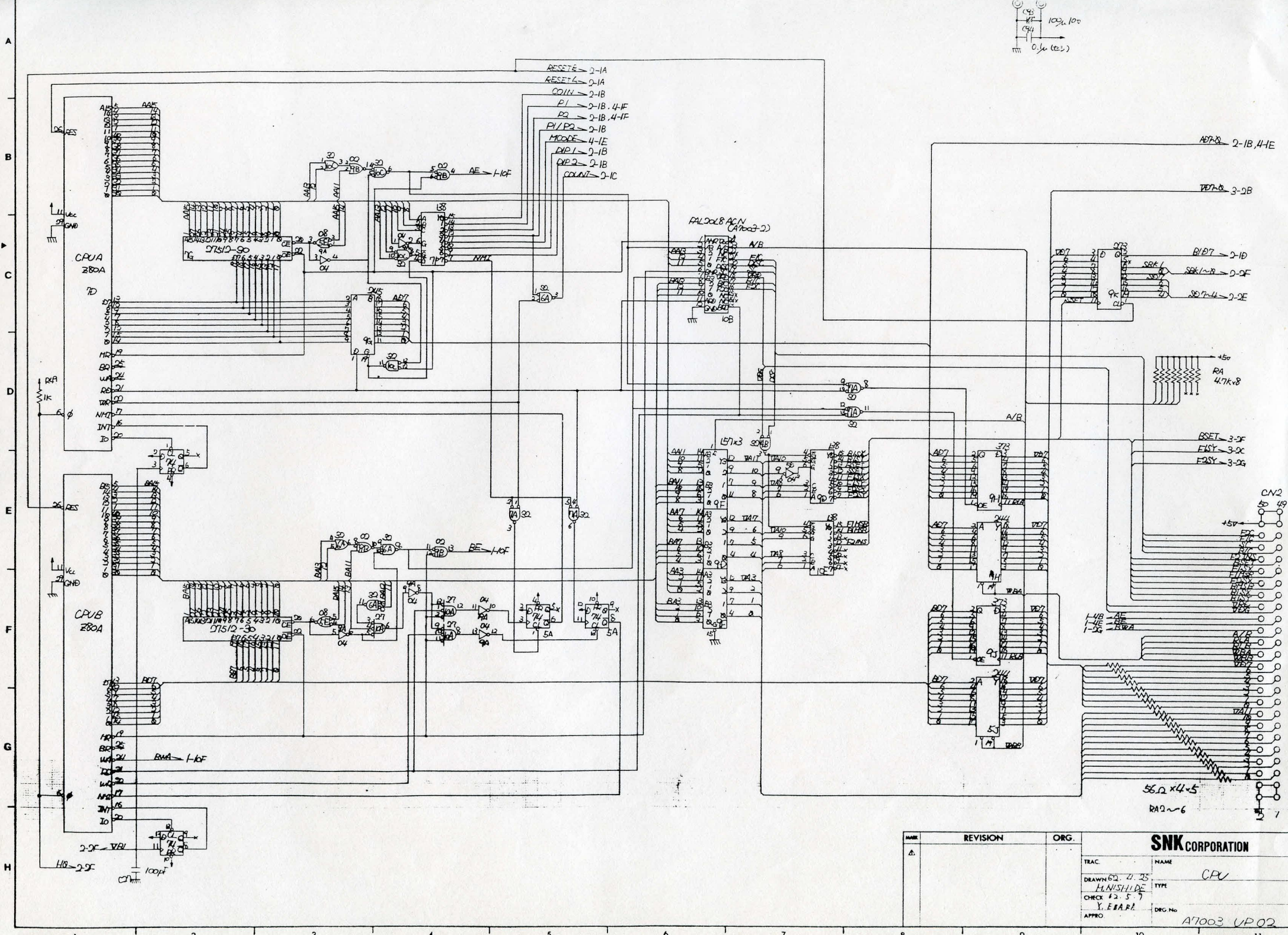
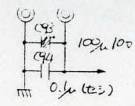
CHOPPER-1 2 BD SET



MARK	REVISION	ORG.	SNK ELECTRONICS	
631.20	LS283 FH8-3 DELETE		TRACE	NAME
	FH8-3 → H8-3 change		DRAWN 63.4.24	HYPER SPEED CLOCK
			CHECK	TYPE
			APPRO	DRG No.
				A7003 UP01 1/5

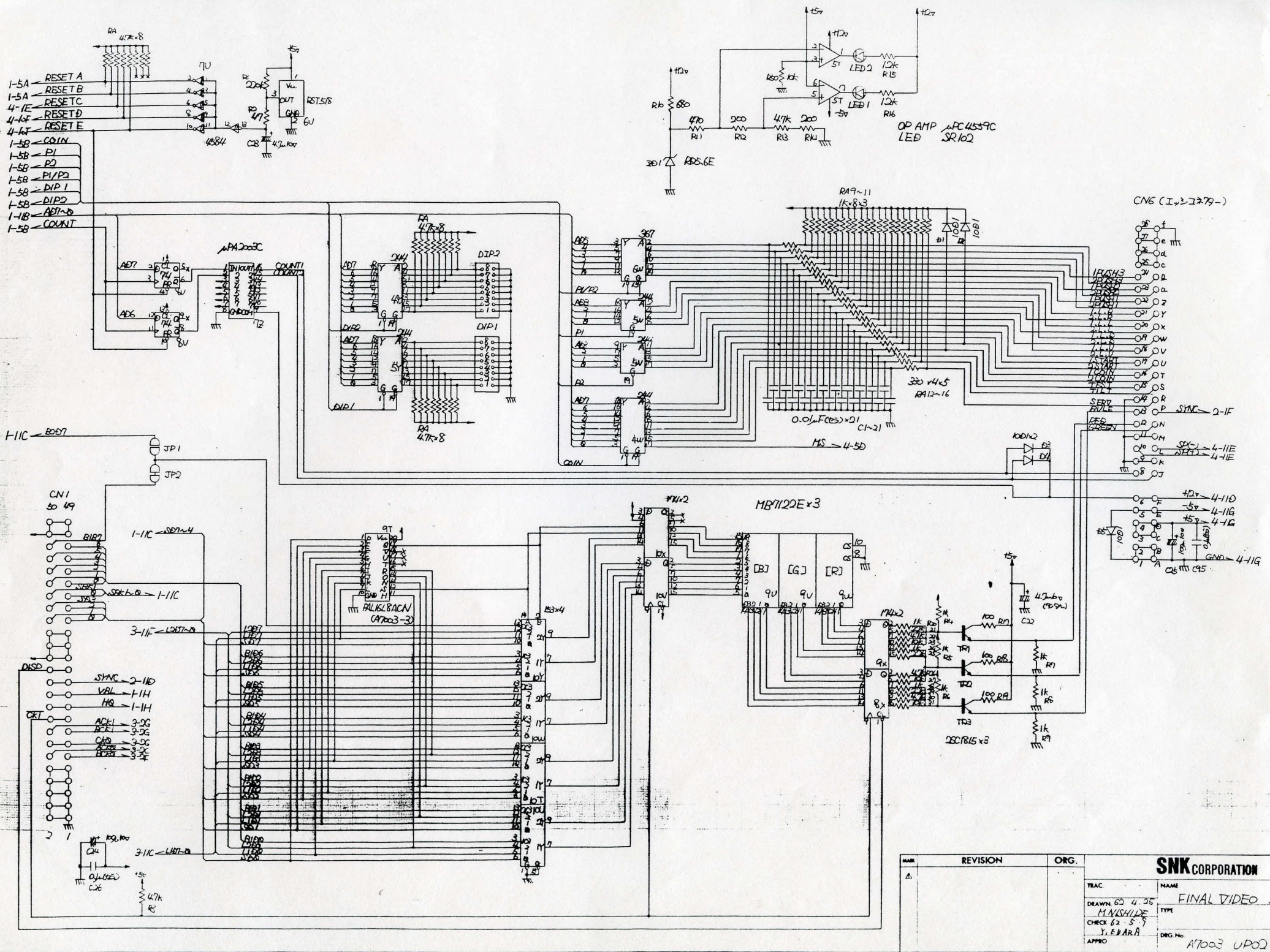


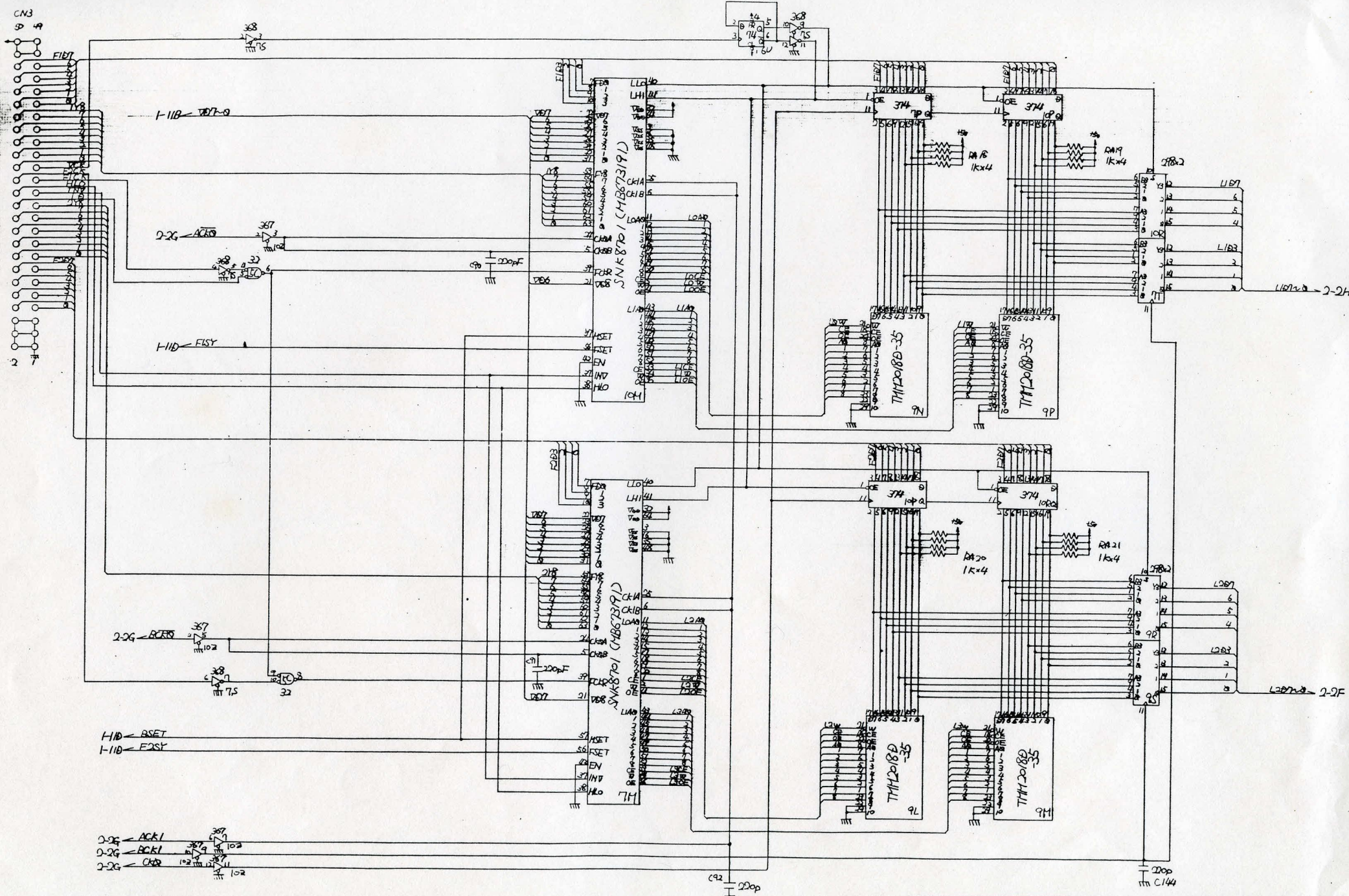
NAME	REVISION	ORG.	SNK CORPORATION	
			TRAC	NAME
			DRAWN 50 4-25	FRONT 2 VIDEO
			CHKD T. NISHIDE	TYPE
			CHECK 12.5.9	
			Y. Y. YARA	DRG No.
			APPRO	A7003 UP01 5/



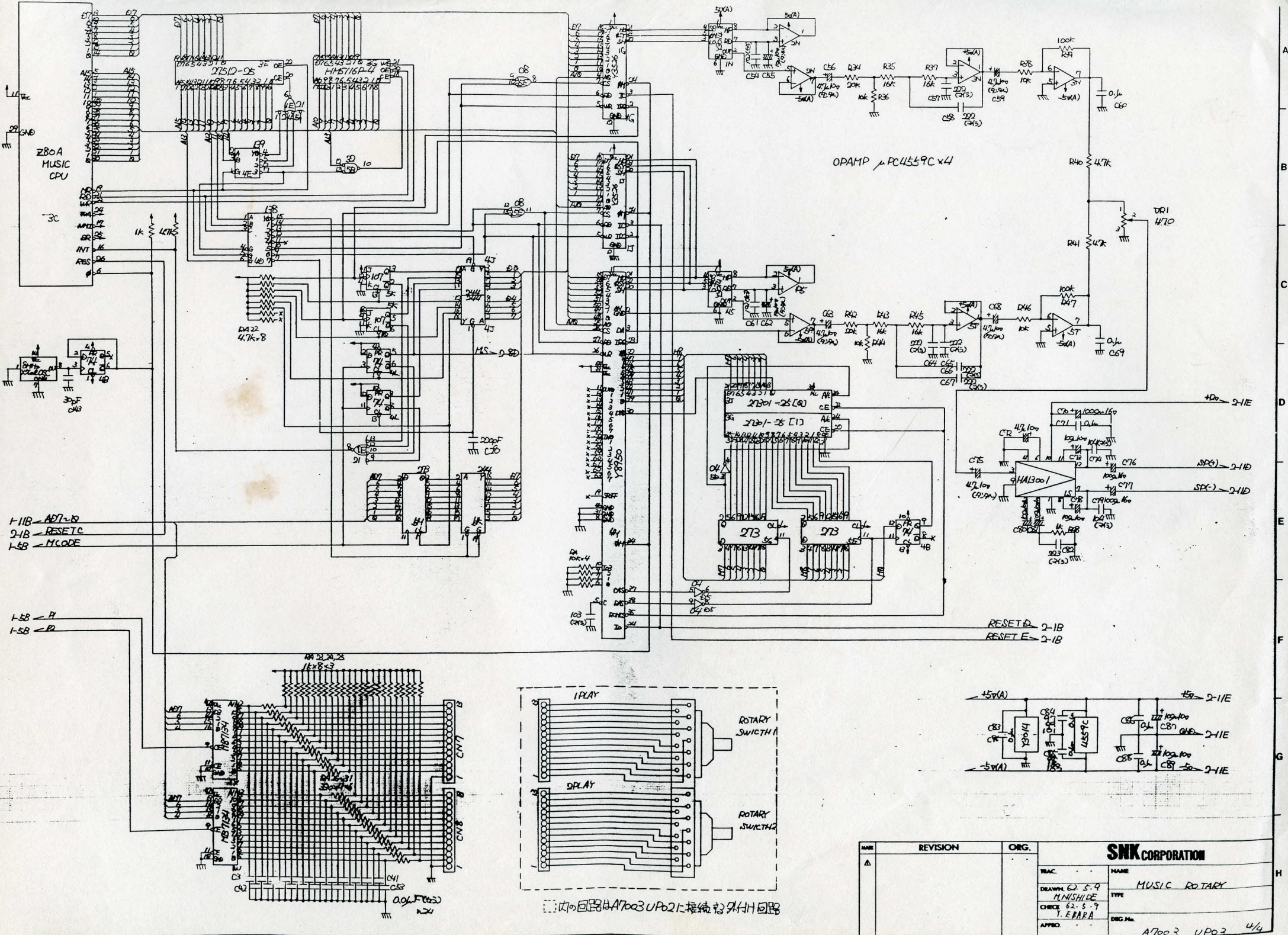
REV.	REVISION	ORG.	SNK CORPORATION	
Δ			TRAC	NAME
			DRAWN 52. 21. 25	CPU
			CHECK 52. 5. 7	TYPE
			Y. EBARI	ORG. No.
			APPRO	A7003 UP02 1/2

A
B
C
D
E
F
G
H





REV	REVISION	ORG.	SNK CORPORATION	
Δ			TRAC	NAME
			DRAWN 60.4.74	LINE BUFFER
			CHECK 12.5.74	TYPE
			APPRO. Y. EBARA	ORG. NO.
				A7003 UPO2 3/4



Z80A MUSIC CPU

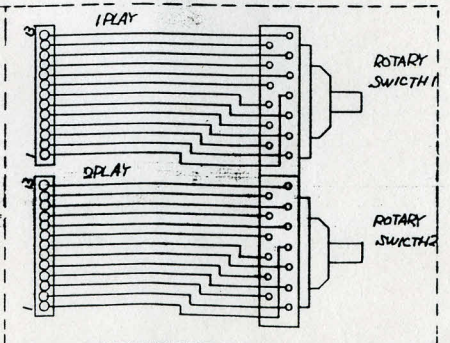
-3C

1-11B - A07-10
2-1B - RESET C
1-5B - MCODE

1-5B - H
1-5B - R

OPAMP μPC4559C x4

RESET D 2-1B
RESET E 2-1B



この回路はA7003 UP02に接続する外部回路

REVISION		ORG.	SNK CORPORATION	
A			NAME	MUSIC ROTARY
			TYPE	
			DWG No.	A7003 UP03 4/4

DRAC
DRAWN G. S. O
M. NISHIOE
CHECK G. S. O
Y. EPARA
APPRO.